

WAC LIGHTING

STRUT

Suspended Channels

Fixture Type: _____

Catalog Number: _____

Project: _____

Location: _____

ORDER NUMBER

System	Model	Length	Finish	
S2	CPS01	1 ft Suspended Channel	Direct and/or Indirect Compatible Connected Power Unit Required	BK Black WT White
	CPS01.5	1.5 ft Suspended Channel		
	CPS04	4 ft Suspended Channel		
	CPS08	8 ft Suspended Channel		
	CPS12	12 ft Suspended Channel		

Example: **S2CPS08-BK** Each section comes with two matching end caps and may be cut at end run.

PRODUCT DESCRIPTION

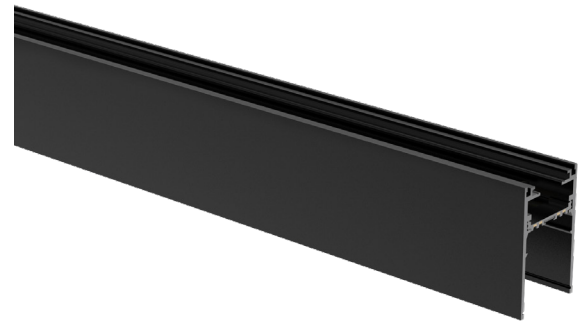
The only lighting, power, and control system complete with lighting elements designed for discriminating performance. Configure STRUT for your retail, restaurant, commercial office, or residential lighting plan without custom lead times - get exactly what you want, when you want it.

FEATURES

- Heavy duty grade 48VDC channel with data bus.
- Operating Current: Max circuit is rated 12A
- Magnetic infrastructure allows you to slide elements within the STRUT and adjust lighting effects while powered
- Black copper busways for power and communications
- 5 Year warranty

SPECIFICATIONS

Construction:	Extruded aluminum with solid copper alloy bus bars
Input:	48 VDC
Mounting:	Suspended
Finish:	Electrostatically Powder Coated White, Black
Standards:	UL, cUL, Dry Location Listed



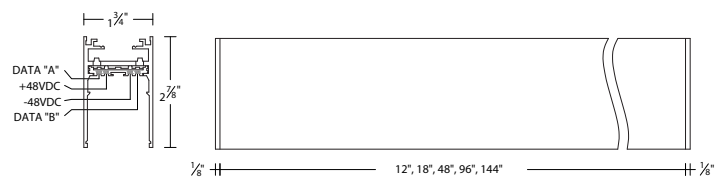
FINISHES



Black

White

LINE DRAWING



WAC LIGHTING

STRUT

Suspended Channels

Fixture Type: _____

Catalog Number: _____




Project: _____

Location: _____





CHANNEL COVER

	Channel Cover 8ft 8ft length may be field cut, Suitable for top or bottom channel coverage.	S2C-COV08	BK WT	Black White
--	---	------------------	------------------------	----------------

TRIG

Accessories	System	Finish
 Trig with Feed Includes 96in feed wire, and 2 channel connectors. Suspension Hardware sold separately. Aircraft cable only.	S2CPS-FTRIG	BK WT Black White
 Trig Includes 2 channel connectors. Suspension Hardware sold separately. Stem and Aircraft cable compatible.	S2CPS-TRIG	BK WT Black White
 Adapter Additional Trig connectors	S2CPS-NADP	BK WT Black White

CONNECTORS

Accessories	System	Finish
 Feed End Includes 96in feed wire and 10 wire guides	S2CP-FE	BK WT Black White
 I Connector with Feed Includes 96in of feed wire and 10 wire guides	S2CP-FI	BK WT Black White
 I Connector Joins two sections of channel with electrical continuity	S2CP-I	BK WT Black White
 Dead I Connector Joins two sections of channel without electrical continuity	S2C-ID	BK WT Black White
 End Cap Additional end cap	S2CPS-EC	BK WT Black White

WAC LIGHTING

STRUT

Suspended Channels

SUSPENSION HARDWARE

Fixture Type: _____

Catalog Number: _____

Project: _____

Location: _____

	Accessories	System	Finish	
	Cable Canopy <i>Covers a standard 4in junction box. Use with cable feed connectors</i>	S2CP-CP	BK WT	<i>Black White</i>
	Cable Suspension <i>Suspend channel from ceiling. Includes 96in aircraft cable; may be field cut</i>	S2C-C96	BK NI	<i>Black Nickel</i>
	Sloped Ceiling Cable Suspension <i>Suspend channel from a sloped ceiling. Includes 96in aircraft cable; may be field cut</i>	S2C-SC96	BK NI	<i>Black Nickel</i>
	Stem Feed Suspension <i>Suspend channel from ceiling with feed. Includes two 48in stem; may be field cut</i>	S2C-FS96	BK WT	<i>Black White</i>
	Stem Suspension <i>Suspend channel from ceiling. Includes two 48in stem; may be field cut</i>	S2C-S96	BK WT	<i>Black White</i>
	Sloped Ceiling Stem Suspension <i>Suspend channel from a sloped ceiling. Includes two 48in stem; may be field cut</i>	S2C-SS96	BK WT	<i>Black White</i>
	Suspension Loop <i>Mechanical loop Supports up to 15 lb</i>	S2C-LOOP	BK	<i>Black</i>

WAC LIGHTING

STRUT

Suspended Channels

Fixture Type: _____
 Catalog Number: _____
 Project: _____
 Location: _____

BUILD IT

CHOOSE YOUR CHANNELS AND CONNECTORS

- Power feed from end with S2CP-FE, the middle with S2CP-FI, or from the TRIG with S2CPS-FTRIG to energize your run.
- Support Strut with cable or stem suspensions. Minimum two supports per 4ft and 8ft sections. Minimum three supports per 12ft section.
- For patterns, use the TRIG connector. TRIG connector can accept as few as two and as many as six connections. Order additional TRIG connectors as needed. TRIG connectors have a switch to maintain pattern polarity.

Note: STRUT is field cut at end of run. For patterns and custom length channels, consult factory.

CHOOSE YOUR ELEMENTS AND/OR INDIRECT LIGHTING ELEMENTS

Note: Suspended strut is compatible with indirect lighting by default.

- Refer to element specifications to appropriately select elements
- Total the wattage of the system

CHOOSE YOUR CONNECTED POWER UNIT (CPU)

- Select remote mount or surface CPU
- Select appropriate wattage based on total system wattage.

Note: recommended sizing up as feasible for increased system capability.

ACCESSORIZE

- Add channel covers, lenses, or glare control accessories as desired.

A	S2CPS04	4FT SUSPENDED CHANNEL	F	S2C-FS96	STEM FEED SUSPENSION
B	S2CPS12	12FT SUSPENDED CHANNEL	G	S2C-S96	STEM SUSPENSION
C	S2CP-FE	FEED END	H	S2CPS-TRIG	TRIG
D	S2C-C96	CABLE SUSPENSION	I	S2CPU-R320-S-BK	REMOTE CPU
E	S2CP-CP	CABLE CANOPY	J	BY OTHERS	FIELD WIRING TO CPU

